

LAWA
LOS ANGELES WORLD AIRPORTS

LAX

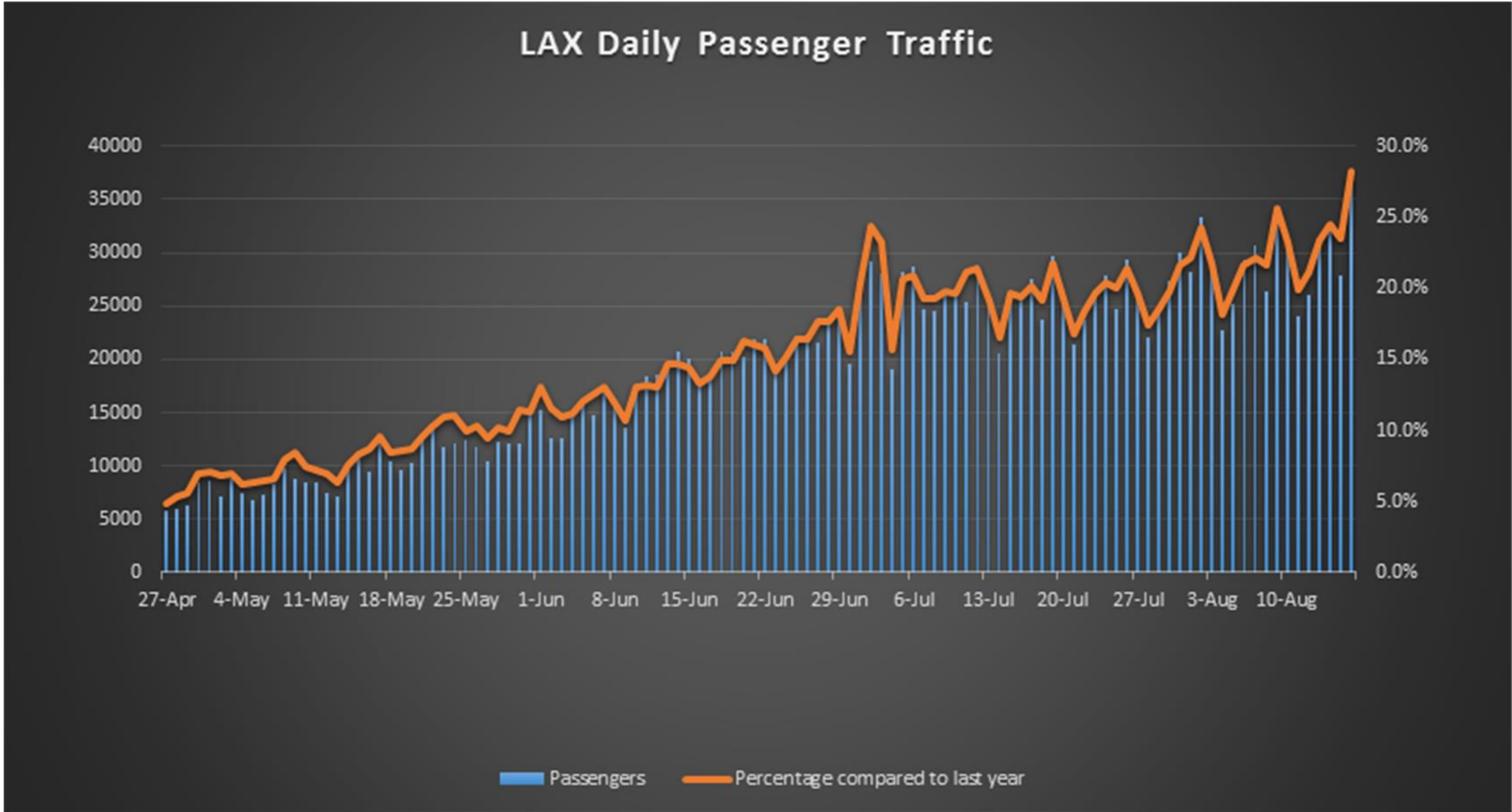
VNY

Los Angeles World Airports Update

Los Angeles City Council
Trade, Travel, and Tourism Committee
18 August 2020

This presentation contains forward-looking statements which may involve known and unknown risks, uncertainties, and other factors which may cause the actual results, performance and achievements to be different from future results, performance and achievements expressed or implied by such forward-looking statements. Actual results could differ materially from those set forth in the forward-looking statements.

LAX Daily Passenger Traffic



LAX Passenger Traffic Comparison


July 2020 vs. July 2019

	Jul-2020	Jul-2019	<u>% Change</u>
<u>Passenger Traffic Totals</u>			
Domestic	1,331,409	5,933,926	-77.56 %
International	191,774	2,535,889	-92.44 %
Total	1,523,183	8,469,815	-82.02 %




Bringing Employees Back to Work

- Approximately 1/3 of workforce (more than 1,100 employees) are **telecommuting**
- Piloting **COVID-19 Screening App** for employees on-site
- Airport Police and LAFD partnering to provide **free COVID-19 tests** to LAWA employees
 - Over 600 employees took part in first two opportunities
 - Third test to be held Aug. 19
- **Temperature Screening Pilot**
- **Space planning** to create proper physical distance
- Installed **Plexiglas barriers** on public counters




DO NOT ENTER


IF YOU ARE EXPERIENCING SYMPTOMS OF RESPIRATORY ILLNESS.
(including fever or cough).
Instead, immediately contact your health care provider.



- **FACE COVERINGS ARE REQUIRED** for all who enter this building



- You must **STAY 6 FEET AWAY** from other people to the greatest extent possible.



- **WASH YOUR HANDS** or use hand sanitizer frequently, and avoid touching your face.

Stopping the spread of COVID-19 is everyone's responsibility.
Thank you for doing your part to save lives.

Work Safely at **LAWA**

Travel Safely at LAX

Touchless Technology

- Touchless faucets pilot
- Touchless drinking fountains
- Shop & dine expansion for mobile ordering
- Virtual assistance desks
- Facial recognition at Global Entry kiosks

Physical Distancing & PPE

- PPE vending machines
- Face coverings required for all employees & guests
- ~700 Plexiglas barriers installed
- Travel Safely Ambassadors

Keeping Facilities Clean

- UV and ionized air filtration
- UV sanitization of escalator handrails
- Self-sanitizing elevator buttons
- Electrostatic spray units
- UVC light units
- 250+ hand sanitizer stations
- Handwashing reminders
- Frequent cleaning of high-touch areas

Signage and Audio Messages

- Maintain physical distancing
- Wear a face covering
- Wash hands

LAX has installed touchless faucets in this restroom



Travel Safely at **LAX**

[FlyLAX.com/TravelSafely](https://flylax.com/travelsafely)

This restroom is sanitized by UV lights and our committed custodial crew.



Travel Safely at **LAX**

[FlyLAX.com/TravelSafely](https://flylax.com/travelsafely)

Face coverings are required at **LAX**



Travel Safely at **LAX**

[FlyLAX.com/TravelSafely](https://flylax.com/travelsafely)

Leading the Way on Healthy Travel

Terminal Wellness Pilot Project

- Tom Bradley International
- Terminal 2

Air Bridges

- Risk-based approach – working with SFO, Hong Kong, London Heathrow

Rapid COVID-19 Testing

- Exploring partnership opportunities for on-site COVID-19 testing

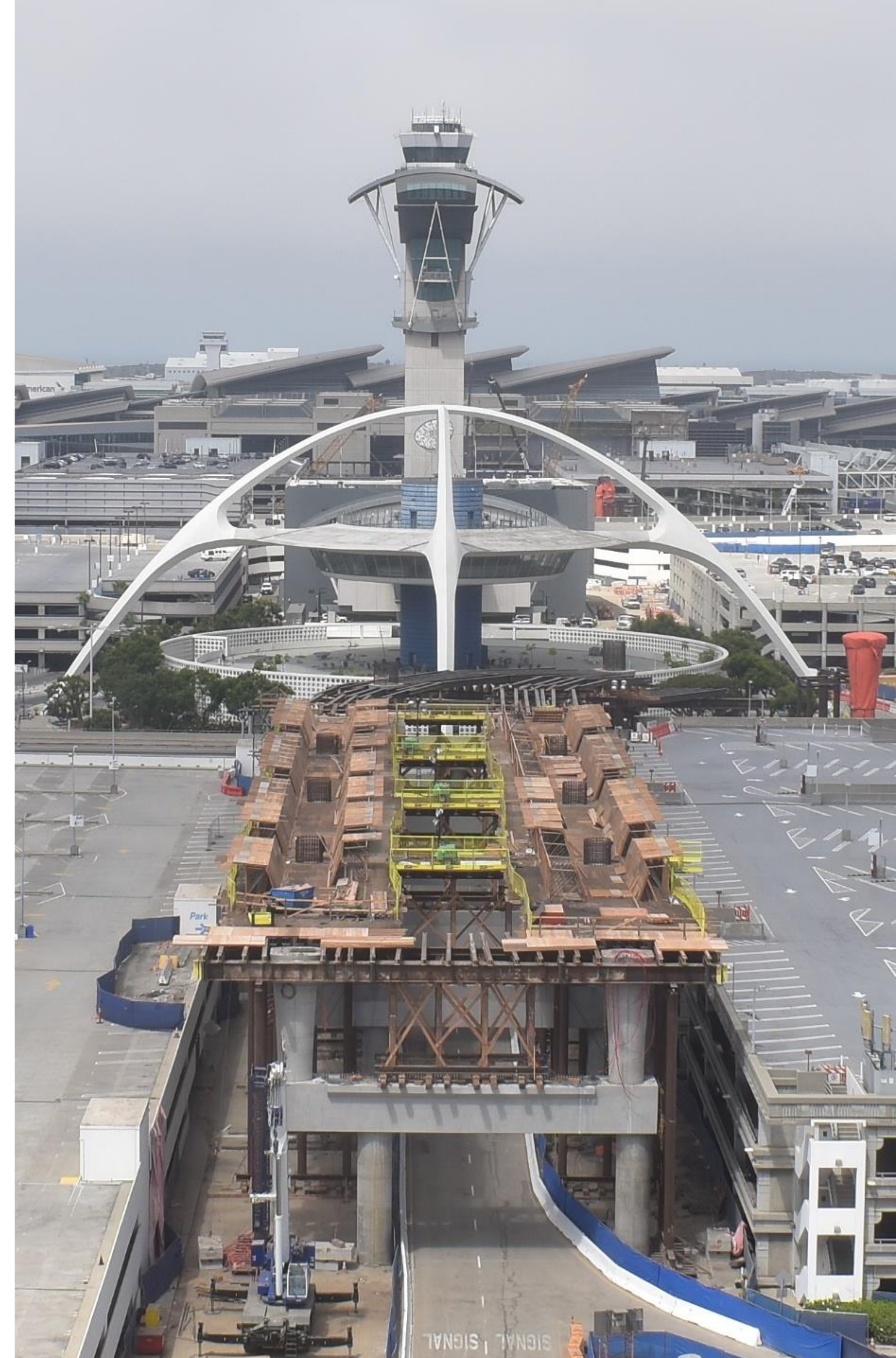
Assessment Tool

- LAWA has partnered with LA County Health, CDC, AAAE, Cedars Sinai and UCLA Health to create Infectious Disease Assessment Tool customized for airport environment

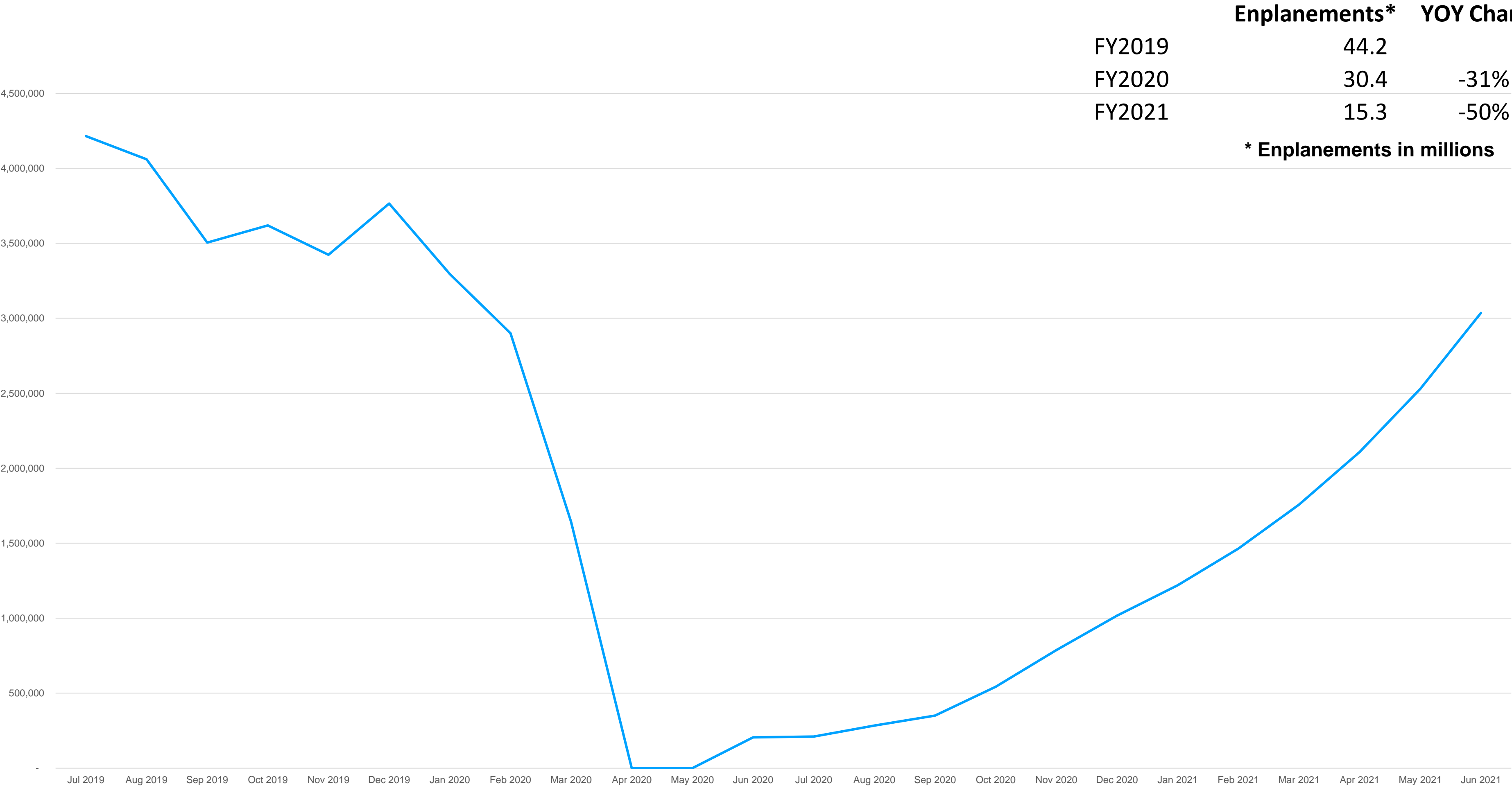


Completing Construction and Repairs

- All projects currently under construction, including the Landside Access Modernization Program (LAMP), Midfield Satellite Concourse (MSC), Terminal Vertical Cores, Terminal Modernization, Airport Police Facility and taxiway improvements continue to move forward
- The Northside Development RFP was set to go out this past spring; now will be finalized in Q4 2020
- The Airfield and Terminal Modernization Project (Terminal 9, Concourse 0, taxiway improvements and roadway improvements) Draft EIR will be released in the coming months
- All contractors/developers abiding by guidelines set forth by Los Angeles Department of Building & Safety
- LAWA is taking advantage of reduced vehicle traffic by implementing longer road closures without impacting airport operations



LAX Enplaned Passenger Traffic Forecast



	Enplanements*	YOY Change	vs. FY2019
FY2019	44.2		
FY2020	30.4	-31%	-31%
FY2021	15.3	-50%	-65%
* Enplanements in millions			

Improving our Fiscal Position & Setting Our Organization Up for Success

FY 20-21 revenues projected to be \$308.1 million lower than FY 19-20

- Staff reduction of 15%: 330 employees retiring by Oct. under SIP + attrition / hiring freeze
 - Looking for additional reductions to personnel costs
- At least 20% budget reduction for all divisions
- Reduced consulting services
- Overtime restrictions

Efficiencies Needed to Deliver Same Level of Service with Less

- Enterprise Procurement Group
- Centralized Administrative Functions
- Consolidation of Divisions
- Some changes will require BOAC approval and/or Council action

Questions?

